

January 15, 2009



www.providencemontessoriky.org

Please see our web page for current Providence postings

January 15, Thursday – Tonight! Pizza @ 5:45pm Lecture and classroom tour @ 6:30 - Parent

Education Night – Why Elementary? Please come and listen to Betty Snider (Room VII head teacher and upper elementary coordinator) discuss the many reasons why continuing your child's Montessori education into the elementary years is so important. Please call school if you plan on attending tonight's meeting.

Kroger - Our Kroger check this month was **\$847.29**. Thanks for your support of this program. If you need a Kroger card they are available in the office.

Contracts – Watch your mailbox for contracts which will be mailed soon.

Ice cream treats for sale! Help we need your support!

Six children from 5th & 6th year will be attending the Montessori Model United Nations Conference in March. They will be selling ICE CREAM TREATS for 50 cents each on Fridays at lunchtime for lower and upper elementary. The funds raised will help offset the expenses for the trip. The children love ice cream - and it's for a great cause!

January 19, Monday – Martin Luther King - No School – All Levels

January 28, Wednesday - 7:00pm - Parent Education Night - Montessori Math! - Montessori Math lessons with Fraction Materials. More details later.

February 5, Thursday – 7:00pm - Parent Education Night A panel of past parents will discuss their child's Montessori years and what comes after.

February 12, Thursday – Breakfast Café – See Flyer Below

February 13, Friday - Conferences for 3rd Year students at all levels. – **No School** – All Levels – Please call Joellen to schedule your conference.

February 16, Monday – President's Day Observed – **No School** – All Levels

February 20, Friday – Contracts and Deposits **Due**.

February 27, Friday – **No School** - All Levels - Professional Development Day

March 13, Friday – *Indian Heritage Night* – 5:30pm – 7:00pm – Bring the family to experience Indian heritage. The night will include hands on experiences including dance, food and culture. Lakshmi Sriraman will perform Bharatanatyam, classical Indian dance. Please watch for more information. Parent and children volunteers needed.

SUMMER CAMPS at Providence Montessori 2009

Planning for this year's summer camps is already underway. Summer camp is designed to provide families with continuity and quality child care for the summer months. There are familiar routines and teachers, with a relaxed atmosphere and opportunities for movement, creative expression, and outdoor activities. Staff will be here from 8am to 5pm, with flexible drop-off and pick-up times. Children will bring their own lunches, with snacks provided by school, and the last day of the week will be pizza day as usual. Primary camp will begin June 1 and run through August 7, and take place in the primary classrooms and Haley Hall. Lower elementary camp will take place from June 1 through July 31, and be held in the Founders' Arts and Activities Building.

To make the experience the best it can be we would like to hear from parents who have enrolled their children in the past. To gauge interest for the coming summer, we welcome input from both new and returning families.

-----Cut-----

If your child has participated in summer camp, please take a few minutes to respond to the following questions:

Did your child's experience in summer camp meet your expectations? _____

What did you like about the program? _____

Any comments about the program? _____

For returning families and new families:

Are you planning to enroll your child in summer camp in 2009? _____ If so, approximately how many weeks would you be interested in? _____

Your name _____ Child(ren)'s name _____

Please return your questions and/or comments to **Emily Balsam** at school.

**Join us for a special parent education series...
Elementary classes will be open to tour.
'Why Montessori Elementary?'**

Thursday, January 15th, 2009

Pizza at 5:45

Session begins at 6:30

Gifted speaker and veteran Montessori Elementary teacher, Betty Snider leads a discussion for parents pondering the question 'Why should I consider Montessori Elementary for my child?' At Providence, hands-on learning does not stop at the primary level. Children in the elementary program make discoveries, research the answers to their questions, work in pairs and teams to solve problems, and come to abstract ideas through the use of the Montessori materials.

and

Montessori Math Adds Up to Success

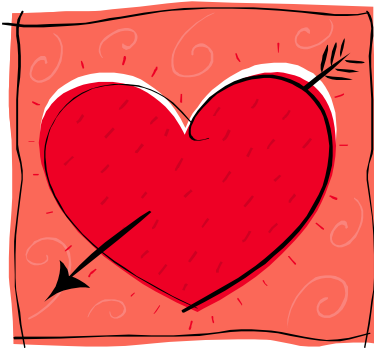
Wednesday, January 28th, 2009

Pizza at 5:45

Session begins at 6:30

Join us as Betty Snider guides us through the development of the mathematical mind. Children experience the operation first, then through observation, create the rule. It's math you can touch, see, experience, observe, and ultimately "own". Children learn the concept of squaring and cubing through the chains, multi-digit multiplication on the checkerboard, and pi with the circle insets. Chains? Checkerboards? Insets? Come learn what Montessori mathematics is all about!

We invite all current and prospective parents to join us for these fun and informative talks, pizza will be served at 5:45 p.m. Childcare is provided for enrolled Providence students, please make reservations for childcare and pizza in advance by calling 255-7330. This event is FREE AND OPEN TO THE PUBLIC.



**February 12, 2009
The Breakfast Café**

Ideas for the Breakfast Café:

Toddler and Room II – Fruit, chesses & hard boiled eggs

Rooms I and V – Baked Breads (bagels, muffins, biscuits, croissants & spreads)

Rooms III, IV and VII – breakfast casseroles & breakfast meats

Rooms VI and VIII – doughnuts, pastries, parfaits & coffee cakes

Items can be dropped off at school beginning

Wednesday, February 11th

Please bring your dish or your breakfast item in something that does not need to be returned or if this is not possible please place your name and child's classroom on bottom of dish. Thank you for your cooperation

How this special morning works:

The Breakfast Café: This is a fun event which takes place in Haley Hall. The fun begins at 7:30am and will last until around 9:00am on Thursday, February 12th. Beverages (coffee, juice & milk) and fresh baked breakfast items will be available at \$3.00 per person (adult/child) or \$10.00 per family. Come and enjoy breakfast with your child/children.

Yes! I am going to help with the Breakfast Café on Thursday, February 12th, 2009

You can count on me to help:

Set up February 11th (night before) – 5:00pm – 6:30pm _____

Work morning of Café (one shift)

Shifts: 6:30am – 7:30am _____

7:30am – 8:30am _____

8:30am – 9:30am _____

Clean up- 9:00am – 10:00 am _____

9:30am – 10:30am _____

You can count on me to bring: see above for your classroom options

Name: _____ **Phone:** _____ **Email:** _____
